



Highlights

- View and schedule work orders, tasks and Preventive Maintenance (PM) forecasts graphically in a Gantt chart
 - View and manage craft load and availability for optimal resource usage
 - Manage dependencies between work orders and tasks
-

IBM Maximo Asset Management Scheduler

Graphically schedule and manage all types of upcoming work

The demand for maintenance-oriented planning and scheduling has increased as maintenance planners are required to become more accountable for accurate planning of resource usage while maximizing asset availability. Customers go to great lengths to maintain their precious assets with elaborate preventive maintenance plans. Being able to look out into the future and determine if adequate resources will be available to accommodate these maintenance strategies is a challenge.

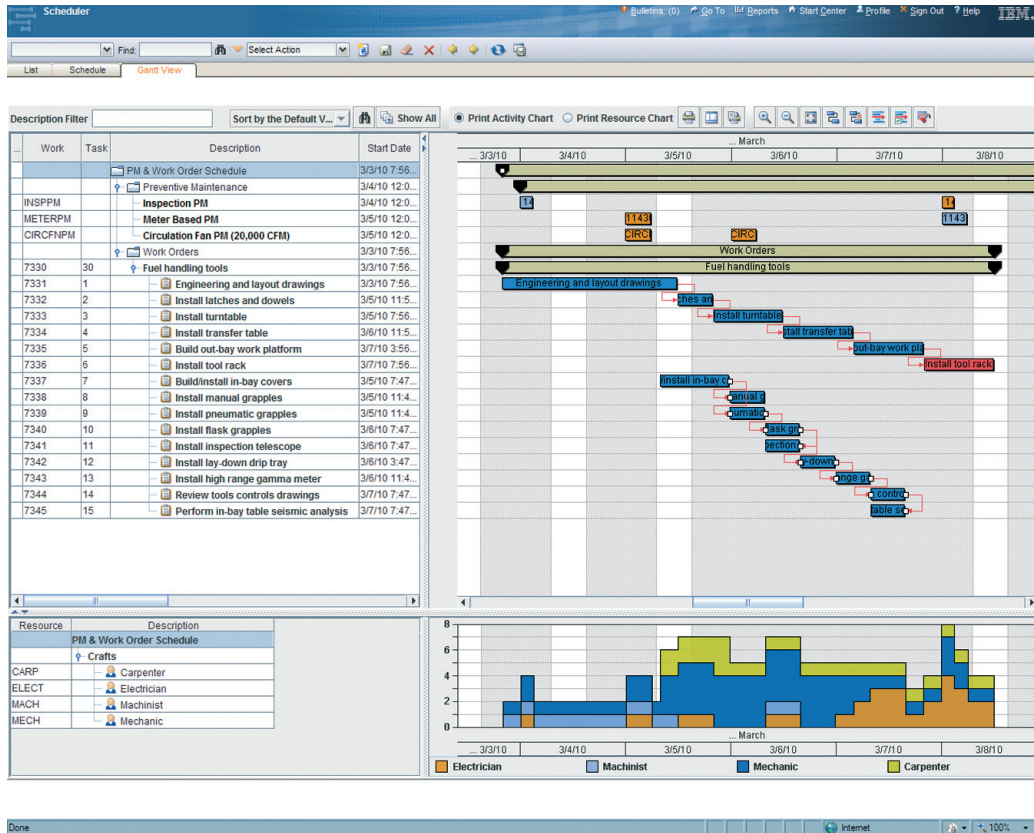
IBM® Maximo® Asset Management Scheduler provides maintenance planners the ability to view multiple work orders and Preventive Maintenance (PM) forecasts in a Gantt chart along with the various crafts that are required to perform the work. This view provides the maintenance planners the ability to compare the resource load with craft availability and to ensure efficient resource usage and timely completion of work orders.

Using the IBM Maximo Asset Management Scheduler, maintenance planners can create schedules that contain work order, task, and forecasted PM combinations that meet virtually any user-defined criteria. These elements can be viewed in a Gantt chart with their corresponding craft requirement. Planners can drag and drop the tasks, work orders, and PM segments to the desired date and time in the chart, or use the advanced Critical Path Method calculation at the push of a button. As the tasks, work orders, and PM forecast segments are maneuvered, the craft load is calculated in real time and displayed graphically in the Gantt chart. Planners can also attach a calendar to these schedules to identify work hours and non-work hours to aid in further managing costly overtime labor.



IBM Maximo Asset Management Scheduler also enables planners to manage task and work order dependencies, as well as any lead and lag times that might exist in those dependencies. Planners can use the embedded auto scheduling tool to schedule these tasks and work orders based on

their duration and dependencies with other tasks, work orders, or PM segments. The two-stage commit process enables the planners to create “what if” scenarios before committing the schedule results to the work orders and tasks.



IBM Maximo Asset Management Scheduler graphically illustrates work orders and PM forecast segments on the Gantt view, accompanied by the craft requirements to carry out the work.

The IBM Maximo Asset Management Scheduler possesses PM forecasting capabilities that allow the planner to create forecasts for any asset, easily respecting their varying levels of criticality. It allows them to look out into the future and adjust the overall schedule to meet the anticipated craft levels, not to mention the accommodation of events, shutdowns, or changes in production levels. Planners may also incorporate upcoming project work and corrective maintenance work orders along with their forecasts within the Gantt view. This will allow them to dynamically adjust schedules respecting any and all known upcoming activity. With Maximo Asset Management Scheduler, planners are offered an easy to use planning tool for scheduling all upcoming work, facilitating optimal resource utilization.

The PM forecasting capabilities leverage the depth of PM functionality that is the heritage of Maximo. Any type of PM may be projected outward to any sized forecast window. Automated tools insure that the forecast will be refreshed,

with the desired forecast window automatically maintained over time. These tools will also recognize and regenerate variable interval forecasts that no longer are a true reflection of the assets' usage. Forecasts may have their dates moved, and optionally, have the move reflected throughout remaining dates within the forecast.

IBM Maximo Asset Management Scheduler enables planners to view all open work orders and forecast work on an asset in a Gantt chart so that they can be grouped logically and scheduled together to reduce asset downtime. The ability to view craft load against availability helps the planners to resolve resource over allocation and underutilization. One dynamic view of emergency, planned, and unplanned work, that compete for schedule and resource, enables efficient work planning and prevents costly production interruptions and delays.

For more information

To learn more about IBM Maximo Asset Management Scheduler, please contact your IBM marketing representative or IBM Business Partner, or visit the following Web site:

ibm.com/tivoli.

About Tivoli software from IBM

Tivoli software from IBM helps organizations efficiently and effectively manage IT resources, tasks and processes to meet ever-shifting business requirements and deliver flexible and responsive IT service management, while helping to reduce costs. The Tivoli portfolio spans software for security, compliance, storage, performance, availability, configuration, operations and IT life-cycle management, and is backed by world-class IBM services, support and research.



© Copyright IBM Corporation 2010

IBM Corporation
Software Group
Route 100
Somers, NY 10589 U.S.A.

Produced in the United States of America
March 2010
All Rights Reserved

IBM, the IBM logo, ibm.com, Maximo and Tivoli are trademarks or registered trademarks of International Business Machines Corporation in the United States, other countries, or both. If these and other IBM trademarked terms are marked on their first occurrence in this information with a trademark symbol (® or ™), these symbols indicate U.S. registered or common law trademarks owned by IBM at the time this information was published. Such trademarks may also be registered or common law trademarks in other countries. A current list of IBM trademarks is available on the Web at "Copyright and trademark information" at ibm.com/legal/copytrade.shtml

Other product, company or service names may be trademarks or service marks of others.

References in this publication to IBM products and services do not imply that IBM intends to make them available in all countries in which IBM operates.

Product data has been reviewed for accuracy as of the date of initial publication. Product data is subject to change without notice. Any statements regarding IBM's future direction and intent are subject to change or withdrawal without notice, and represent goals and objectives only.

THE INFORMATION PROVIDED IN THIS DOCUMENT IS DISTRIBUTED "AS IS" WITHOUT ANY WARRANTY, EITHER EXPRESS OR IMPLIED. IBM EXPRESSLY DISCLAIMS ANY WARRANTIES OF MERCHANTABILITY, FITNESS FOR A PARTICULAR PURPOSE OR NON-INFRINGEMENT. IBM products are warranted according to the terms and conditions of the agreements (e.g. IBM Customer Agreement, Statement of Limited Warranty, International Program License Agreement, etc.) under which they are provided.

The customer is responsible for ensuring compliance with legal requirements. It is the customer's sole responsibility to obtain advice of competent legal counsel as to the identification and interpretation of any relevant laws and regulatory requirements that may affect the customer's business and any actions the customer may need to take to comply with such laws. IBM does not provide legal advice or represent or warrant that its services or products will ensure that the customer is in compliance with any law or regulation.



Please Recycle